



**Private Big 5 Safari or
Wildebeest Migration
Safari for two**

3 nights - 4 days



Travel, Explore &
Experience:
Through the eyes
of a local

OSEKI
MARA
CAMP

WWW.OSEKIMAASAIMARACAMP.COM



Why choose us

WHO ARE WE?

We are a small community based Eco camp, run by one Dutch young woman named Anne & an original Maasai Warrior & Maasai Community chief named Shinka Parmuat, shortly known as Dennis.

You might start thinking, why the name Dennis? But each Maasai is born with 2 names. One part of their tribe & one English or biblical one. But enough said, Let us further introduce Shinka who is a young community leader from the Siana/ Nkineji area, passionate about people, wildlife conservation & community work aiming to guide the next generation in his area to success and more stability - all through tourism.

Shinka knows how to balance both modern life & Maasai culture - steering the next generation to new hopes, connections & prosperity. Together with our team of experienced young Maasai men & women we like to welcome you at our camp, in a beautiful open location only 5 minutes from the Masai Mara National Reserve.

THROUGH THE EYES OF A LOCAL

Our new package line called "Through the eyes of a local" is especially designed to highlight not only the natural wonders that the Masai Mara has to offer - but this through the eyes of a highly experienced and passionate Maasai. Who literally knows the Masai Mara back & forwards. Seeing it through their eyes does not only give local people a platform but it also shows how talented they really are. They will blend in their culture with nature and you will truly learn & see many new things once you open your mind to it.

To experience the Masai Mara "through the eyes of a local" that in this a Maasai is what sets us apart and creates an unforgettable journey for you into the wild!

P.S We do have a very laid back & simple approach - it's a family vibe! Please do not compare us with the big lodges in the Mara. We are about simplicity appreciating the simpleness & authenticity of what the Maasai culture is able to offer

THROUGH THE EYES OF A LOCAL

What is included



3 nights in a Spacious safari tent with private bathroom + full board & wifi in the main area & unlimited tea, coffee, hot chocolate & drinking water



Two full day private safari for two

Park fees 2 international or national adults for 2 full days
Guide/driver - private 4x4 safari vehicle for 2 full day with open roof & canvas windows



Private transport to & from Nairobi

Option to take public transport instead



Bushwalk with archery class- excellent way to spent time with the local Maasai and lift up your Bush survival skills while learning lots about the medicinal uses of the plants & trees in the area



Excludes any alcohol beverages/ softdrinks taken. Excludes travel insurance & health insurance. International/domestic flights. Staff tips
2.9% international transfer fee. Other payment options such as mpesa, Revolut are available too to greatly reduce the international transfer fees.

WhatsApp us for more advice: +31617206539 Anne

YOUR SCHEDULE

DAY 1: Arrival for lunch (13:00) + Bushwalk with archery class & medicinal plant tour

Starting at 3:30 PM - 5:30/6:00 PM

DAY 2: Full day private Big 5 safari for two
Between July & October = The Wildebeest Migration is happening

5:45 - 15:30 o'clock - picnic lunch in the park or lunch at the camp

DAY 3: Full day private big 5 safari for two
Between July & October = The Wildebeest Migration is happening

5:45 - 15:30 o'clock - picnic lunch in the park or lunch at the camp

If lunch at the camp is taken instead then you can go out on safari from 5:45-6:00 to 13:00 and from 3:30 to 6:30 in the evening

DAY 4: Breakfast + Departure day (To Nairobi).

Breakfast between 8-9 o'clock

If preferred so:

A visit to the local Maasai church on Sunday, school or clinic can also be implemented in this package at no extra cost. On the next page we have some other options that can be added to this package. Best to be done on the 4th day

E-MAIL: OSEKIMAASAIMARACAMP@GMAIL.COM

TEL: +254714078970/+31617206539

WWW.OSEKIMAASAIMARACAMP.COM

NON-RESIDENT
LOW SEASON RATES:
JUNE TO JANUARY

Package with *private* road transport
from/to Nairobi
non-resident rates

Includes: 3 nights accomodation + full board.
Two full day private safari + Maasai guide/driver,
A bushwalk with archery class & medicinal plant tour.
Private transport, international park entrance fees.

2 people: \$1,598
(Per person: \$799)

NON-RESIDENT
HIGH SEASON RATES:
JULY TO DECEMBER

Package with *private* road transport
from/to Nairobi
non-resident rates

Includes: 3 nights accommodation + full board.
Two full day private safari + Maasai guide/driver, a bushwalk with
archery class & medicinal plant tour, private transfer,
international park entrance fees.

2 people: \$1,998
(Per person: \$999)

**Note that: Fees exclude 2.9% international transfer fees
unless paid via mpesa or in cash or by an international payment
method with more favorable transfer fees upon availability**



Extra's - to make your experience with us more unique



Elephant hike with Maasai Warriors
\$35 per adult



Maasai village visit + welcoming dance
Fee 50/50 shared with the village
\$25 per adult



Hot air balloon safari with luxury breakfast with
champagne & a mini safari + pick up/drop off & park
landing fee & official certificate of your flight
attendance
\$450 per adult



Horseriding safari of 2 hours + luxury bush breakfast with champagne
\$200 per adult

*WhatsApp us for more advice: +31617206539 Anne
Budget transfer options available too*



**SPACIOUS SAFARI TENTS EQUIPPED
WITH A PRIVATE BATHROOM**

**E-MAIL: OSEKIMAASAIMARACAMP@GMAIL.COM
TEL: +254714078970/ +31617206539
WWW.OSEKIMAASAIMARACAMP.COM**

The image shows the interior of a safari tent. On the left, there is a wooden bed frame with a white sheet, a red and black striped blanket, and a patterned blanket. A red towel is folded on the bed. To the right, there is a dark wooden chest of drawers with a brown leather suitcase on top. The tent has a large window on the right side, showing a view of the outdoors. The text is overlaid on the bottom half of the image.

2 nights - 3 days Big 5 Safari for two + bushwalk with archery class & medicinal bushwalk

TRAVEL, EXPLORE & EXPERIENCE



Photography by Oseki Camp

2 nights - 3 days Big 5 Safari for two + bushwalk with archery class & medicinal bushwalk

OSEKI MAASAI MARA CAMP
CREATE YOUR OWN EXPERIENCE



OSEKI MAASAI
MARA CAMP
CREATE YOUR OWN EXPERIENCE
Photography by Oseki Camp





PRIVATE BATHROOM & SPACIOUS SAFARI TENT

E-MAIL: OSEKIMAASAIMARACAMP@GMAIL.COM

TEL: +254714078970/ +31617206539

WWW.OSEKIMAASAIMARACAMP.COM



PRIVATE BATHROOM & SPACIOUS SAFARI TENT

E-MAIL: OSEKIMAASAIMARACAMP@GMAIL.COM

TEL: +254714078970/ +31617206539

WWW.OSEKIMAASAIMARACAMP.COM



PRIVATE BATHROOM & SPACIOUS SAFARI TENT

E-MAIL: OSEKIMAASAIMARACAMP@GMAIL.COM

TEL: +254714078970/ +31617206539

WWW.OSEKIMAASAIMARACAMP.COM



PRIVATE BATHROOM & SPACIOUS SAFARI TENT

E-MAIL: OSEKIMAASAIMARACAMP@GMAIL.COM

TEL: +254714078970/ +31617206539

WWW.OSEKIMAASAIMARACAMP.COM

A woman in a black long-sleeved shirt and pink shorts is holding a wooden bow, standing in a savanna landscape. She is facing two men who are wearing traditional red and black checkered shukas. One man is smiling and looking at the woman, while the other is looking towards the camera. The background features acacia trees and a clear blue sky.

EXPERIENCE THE WILD

**AND EXPLORE
THE MASAI MARA ON FOOT**

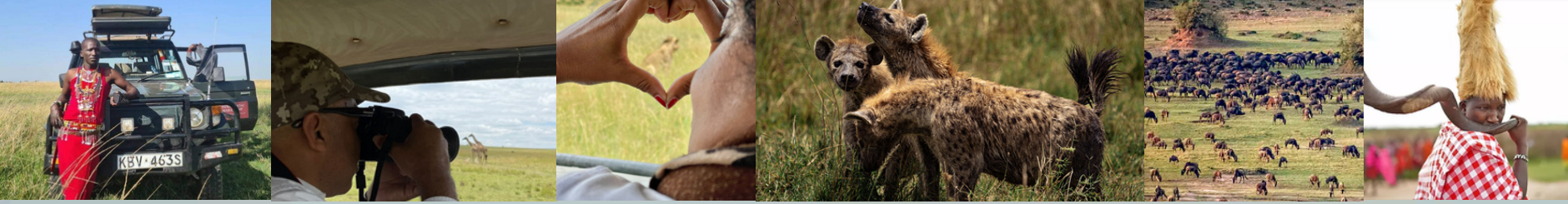
TRAVEL, EXPLORE & EXPERIENCE

BE FREE

SPENT PRIVATE TIME IN THE WILDERNESS



E-MAIL: OSEKIMAASAIMARACAMP@GMAIL.COM
TEL: +254714078970/ +31617206539
WWW.OSEKIMAASAIMARACAMP.COM



BE FREE - BE ONE WITH NATURE



**E-MAIL: OSEKIMAASAIMARACAMP@GMAIL.COM
TEL: +254714078970/ +31617206539
WWW.OSEKIMAASAIMARACAMP.COM**



CULTURAL EXCHANGES

E-MAIL: OSEKIMAASAIMARACAMP@GMAIL.COM
TEL: +254714078970/ +31617206539
WWW.OSEKIMAASAIMARACAMP.COM

Simplicity & locality for two



Meet some members of our team

